

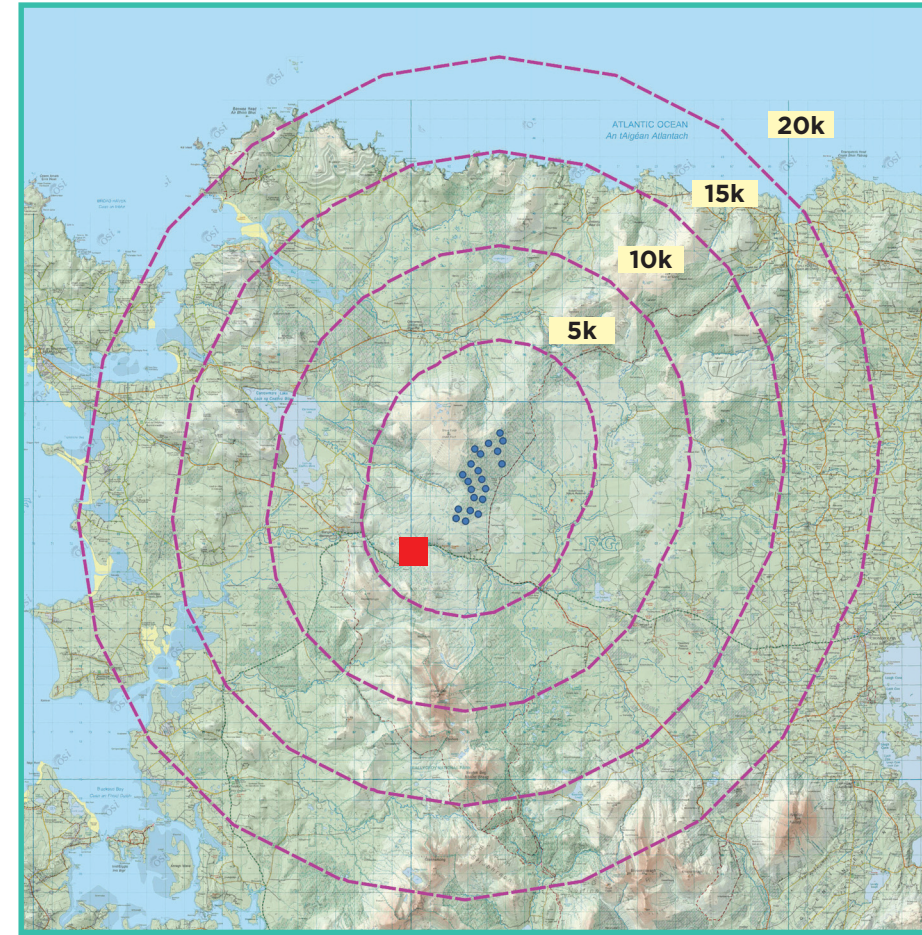
View Point 13

Briska

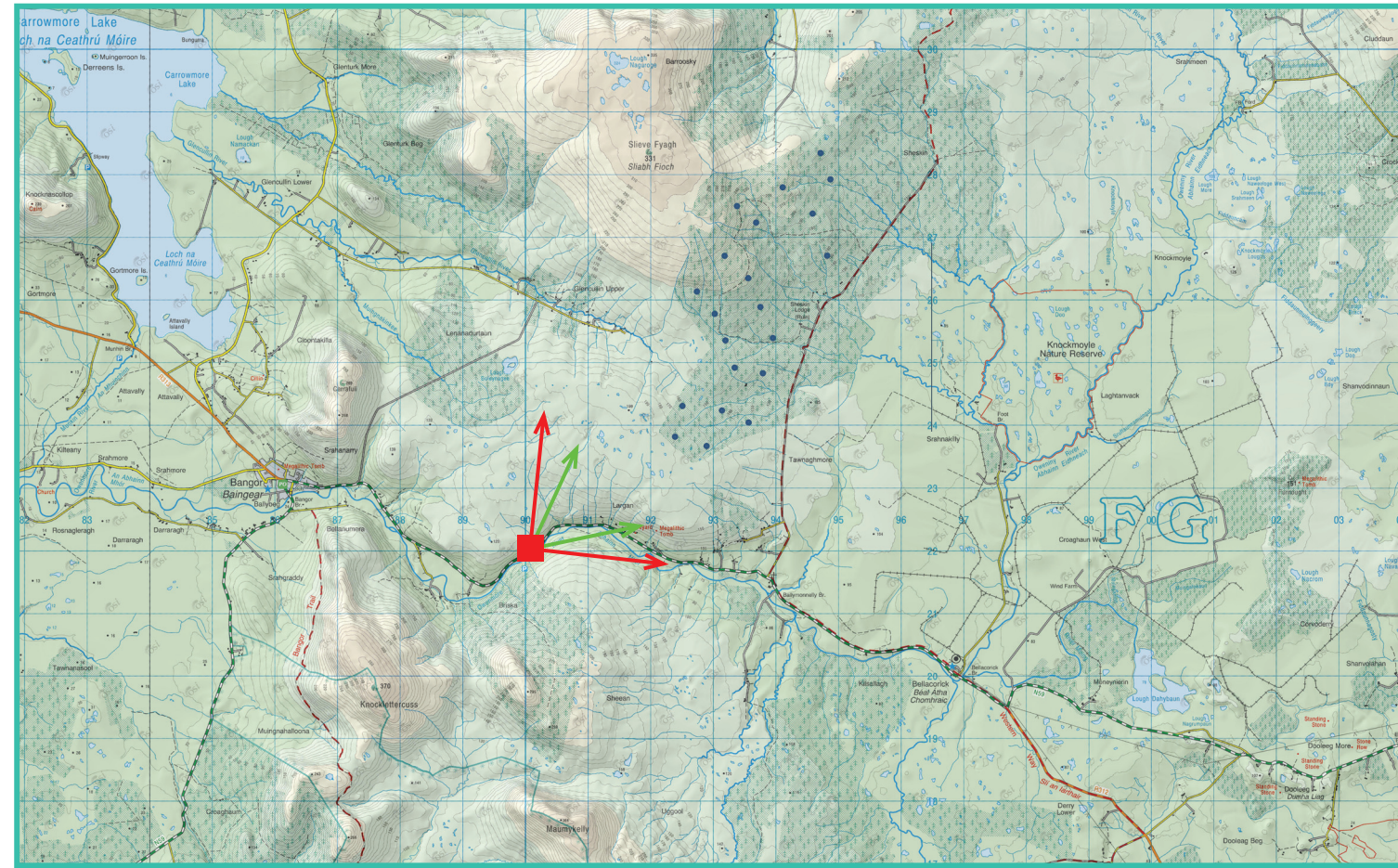
Photomontage 13

View Point: View from the N59 National Road in the townland of Briska, approximately 3 km south-west of the nearest proposed turbine.

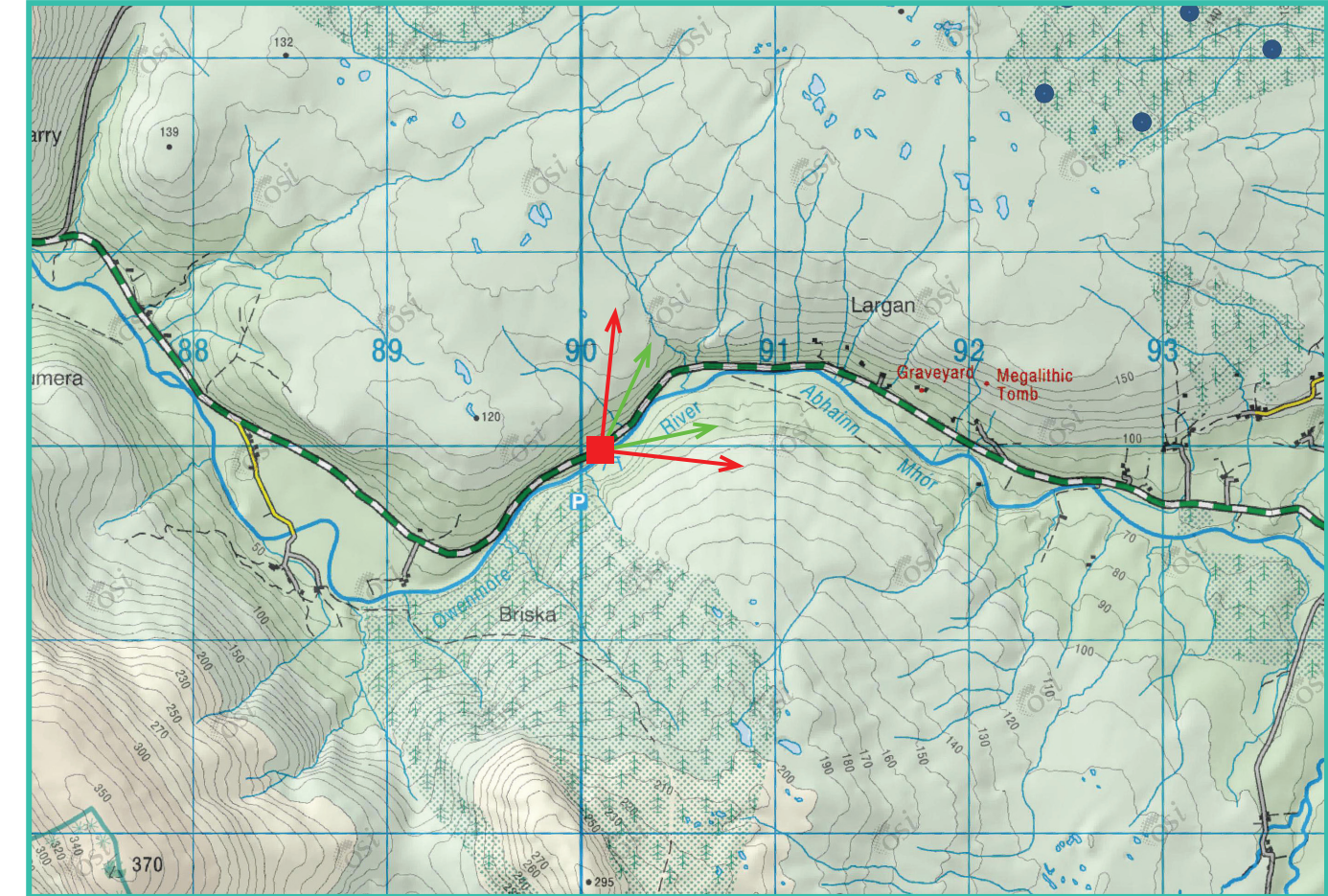
View point grid reference	490,023(E); 821,955(N)
Date of image taken	21.7.2021
Time of image taken	10:26am
View point elevation	53m
Angle of Views	90° / 53.5°
View Direction (Image Centre)	48°
Horizontal extent of proposed turbines	29°
Distance to nearest proposed turbine	3km (T17)
Number of proposed turbines visible	5/21
Turbine Hub Height	115m
Turbine Tip Height	200m
Turbine Rotor Diameter	170m
Montage Type	Type 4* : Photomontage / Photowire / Survey / Scale Verifiable
Camera & Lens	Canon 5D Mark III / Full Frame Sensor with a 50mm Lens
Tripod	Manfrotto 190X extended to approx 1.5m.
Guidance	* Visual Representation of Development Proposals, Landscape Institute Technical Guidance Note 06/19, 2019
Map Licence	© Ordnance Survey Ireland. All rights reserved. Licence number CYAL50267517



View point relative to 20km radius.



View point relative to wind farm site.



Detail of view point location.

Map Legend

Area shown in 90° view

Area shown in 53.5° view

View Point

Wireframe Legend

Proposed Wind Farm

Permitted Wind Farms

Existing/Operational/Under Construction Wind Farms

Other Proposed Wind Farms

Prepared by

MKO
Planning & Environmental Consultants
Tuam Road, Galway.

Tel: (091) 73 56 11
E-mail: info@mkofireland.ie
Website: www.mkofireland.ie



90° View Extent

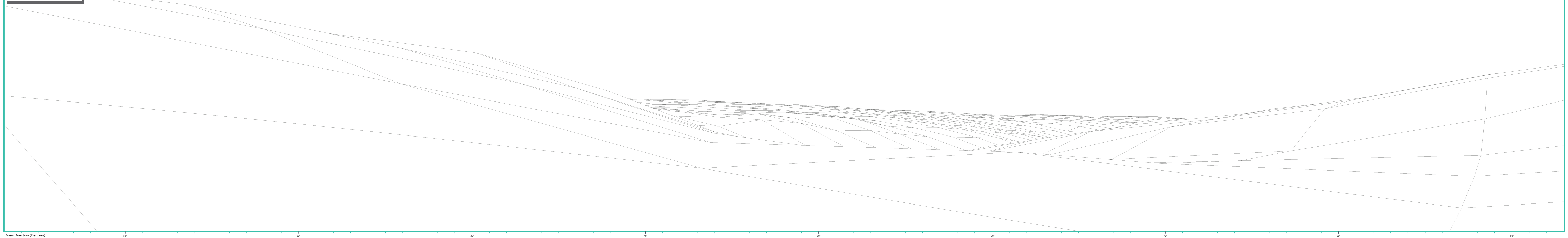
Existing View Image at 120°



53.5° View Extent

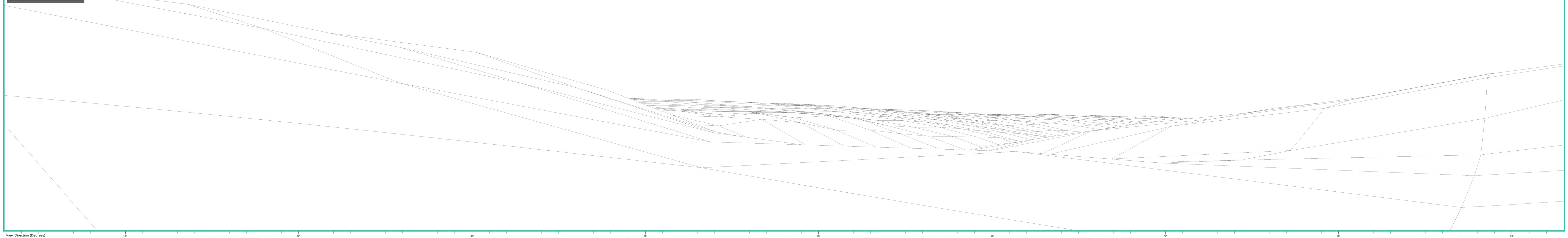


Matching Wireframe





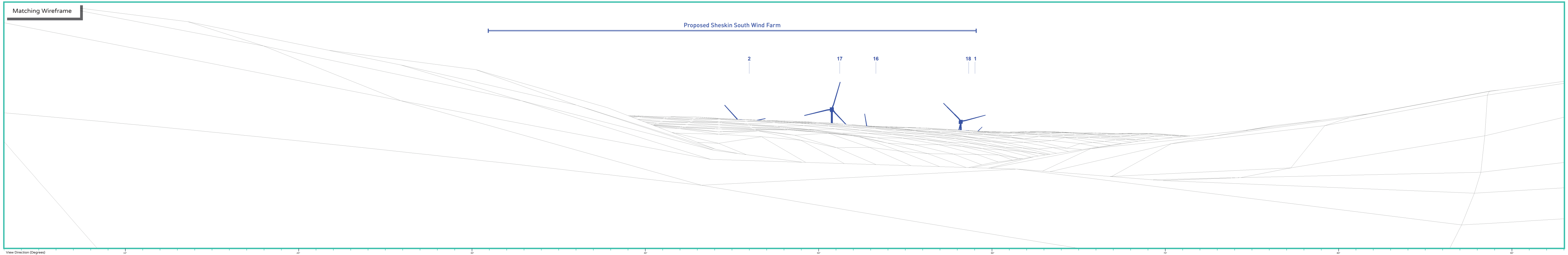
Matching Wireframe



Proposed Photomontage with Cumulative at 90°



Matching Wireframe



Proposed Photomontage with Cumulative at 53.5°



Matching Wireframe

Proposed Sheskin South Wind Farm

2

17

16

18

1

